



Air purifier | Luftreiniger  
| Purificador de aire  
| Purificateur d'air  
| Oczyszczacz powietrza  
| Luftrenare | Luftrenser  
| Ilmanpuhdistin | Luftrenser  
جهاز تنقية الهواء |  
تصفیه کننده هوا |



User Manual | Benutzerhandbuch | Manual de  
usuario | Guide d'utilisation | Instrukcja obsługi |  
Användarmanual | Brugervejledning | Käyttöohje |  
Bruksanvisning | راهنمای کاربری | دليل المستخدم |

**JOY S**

# Blueair JOY S

English User Manual  
Model: Blueair JOY S

SAFETY	04
SYSTEM OVERVIEW	06
WHAT'S IN THE BOX	08
USAGE	09
SETUP	10
ON/OFF AND OPERATING SPEEDS	11
FILTERS	12
CARE AND MAINTENANCE	15
SPECIFICATIONS	16

## General safety instructions

Remember, the JOY S is an electrical appliance. Please read these safety instructions carefully before use and take the necessary precautions to reduce the risk of fire, electric shock or injury. **The JOY S warranty applies only if the unit is used according to these instructions.**



**WARNING:** Indicates a hazardous situation that, if not avoided, could result in death or serious injury.



**CAUTION:** Indicates a hazardous situation that, if not avoided, could result in minor or moderate injury.

### General



**WARNING:**

**To avoid hazardous conditions, only the manufacturer, a service center authorized by Blueair or similarly qualified persons shall replace the power cord, if damaged.**

**CAUTIONS:**



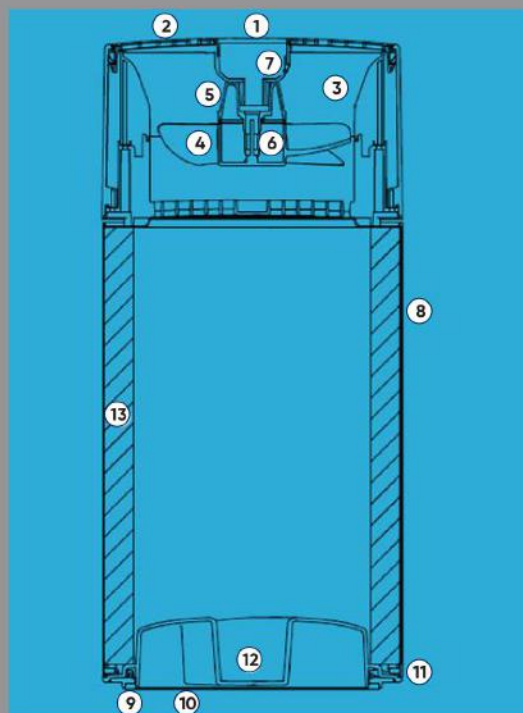
- Use the power cable provided with your JOY S unit to plug directly into an appropriate, electrical outlet. (Refer to the rating label on your unit).
- Do not alter the plug in any way.
- Remember to always disconnect the power supply before servicing the unit.
- Do not use the unit if the power cable or plug is damaged or malfunctions in any manner.
- Keep the power cable away from heated surfaces.
- Do not sit on, stand or climb onto the unit or use the unit either as a table or for storage.
- Do not place any objects on top of the unit, block air outlets or intakes, or allow foreign objects to enter the unit as this may cause an electric shock or damage the unit.

### Intended Use



**CAUTIONS:**

- Supervise children to ensure that they do not play with the appliance.
- This appliance is not intended for use by persons (including children) with reduced physical, sensory or mental capabilities, or lack of experience and knowledge, unless they have been given supervision or instruction concerning use of the appliance by a person responsible for their safety.



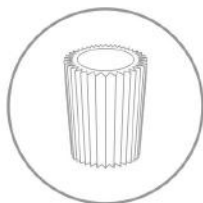
## Blueprint

- 1 Touch button
- 2 Air outlet
- 3 Ion chamber
- 4 Fan blades
- 5 Fan holder
- 6 Fan motor
- 7 PCB (Printed Circuit Board)
- 8 Metal Frame
- 9 Rubber foot
- 10 Bottom lid
- 11 Bayonet connection
- 12 Locking handle
- 13 Main filter (Particle + Carbon filter or Sandwich filter)

## JOY S package



The JOY S air purifier



Particle + Carbon or  
Sandwich filter



Dark Shadow fabric pre-filter  
(accessory)

### Options

- Particle + Carbon filter (replacement filter)
- Sandwich filter (replacement filter)
- Choice of color and design for the fabric pre-filter

## Placement

Place the JOY S in an upright position on the floor in your room. Be sure to place the unit where it won't be knocked over by any person or pet in the household.

### Using the unit in your bedroom?:

After 7 seconds the light automatically dims, and speed control goes into sleep mode. When the light is dimmed down, tap once to activate button and tap one more time to change speed.

### Placing the unit:



Place the unit in a location where air can circulate freely in, out and around the unit.



Do not place the unit closer than 10 cm (4") from another object.



Do not place the unit directly on or against soft furnishings such as bedding or linen.



Make sure that the unit is placed in an upright position, standing on its circular rubber foot.



Do not place the unit near sources of heat, such as radiators, fireplaces or ovens.

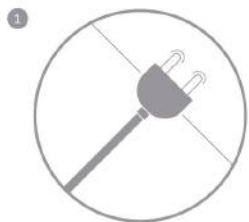


Do not place the unit near wet areas, such as bathrooms or laundry rooms where it may come into contact with water.

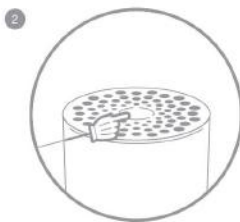


Do not place the unit outdoors.

## Getting started

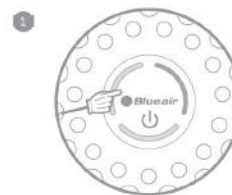


Plug in your JOY S air purifier.

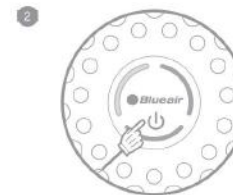


Press the top button to turn the unit on.  
Adjust the speed setting to the required level (see "On/off and speed control").

## On/off and speed control



**On/Low**  
Press once to turn the unit on and set it to the recommended energy-efficient speed 1.



**Medium**  
Press twice to set to medium speed 2.



**High**  
Press three times to set to high speed 3.



**Off**  
Press a fourth time to turn the unit off.

### INFORMATION

The indicator light(s) on the touch button indicate the selected speed for a period of 7 seconds. After 7 seconds the light(s) dim down indicating a non-active speed control mode.

Press the touch button once to reactivate on/off and speed control. The indicator light(s) light up and you can adjust the speed setting again.

Moreover, JOY S has an Autostart feature. This means that JOY S will automatically restart at the set speed if a power failure occurs, the unit is unplugged or a power switch timer is used.

## Filters

### General information

An additional colored pre-filter is delivered in the package to both enhance the unit's appearance and to initially capture any dust particles.

The main filter removes:



PM2.5\*



Dust



Pollen



Pet dander



Mold



Dust mites



Bacteria



VOC



Smoke



Chemicals



Cooking odors

\*Particle matter smaller than 2.5 microns

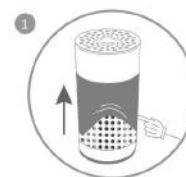
#### IMPORTANT!

Use only genuine Blueair filters to ensure proper function of your unit and to qualify for full warranty coverage.

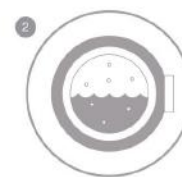
### Vacuum or wash the pre-filter

Occasionally vacuum the exterior of the fabric pre-filter to remove any dust that has collected.

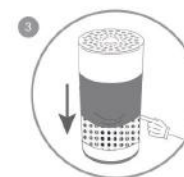
Always unplug the unit before removing the fabric pre-filter.



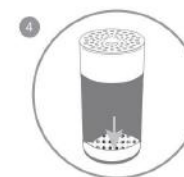
Remove the pre-filter from the unit's metal frame.



Wash the pre-filter in the washing machine, according to instructions on the pre-filter's label.

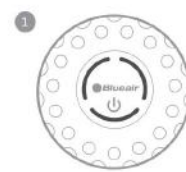


Refit the pre-filter back onto the unit's metal frame by guiding the elastic edge into the slot between the top cylinder and the metal frame.

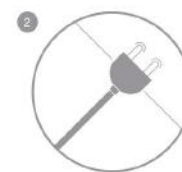


Attach the bottom edge of the pre-filter onto the edge of the bottom lid.

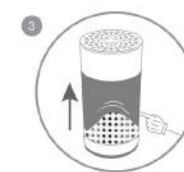
### Changing the main filter



When the indicator lights turn red (after 6 months of operation) it is recommended to change the main filter.



Turn off the unit and unplug it.



Remove the pre-filter from the unit's metal frame.

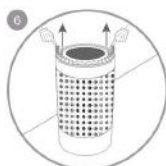


Carefully place the unit upside down on a flat surface and open the bottom lid by rotating counter-clockwise whilst holding the unit.

## FILTERS



Remove the lid from the unit.



Grip the handles on the main filter and pull upwards to remove the main filter from the unit.



Position the new main filter into the metal frame. Ensure that the filter retains its cylindrical shape by pressing it against the metal frame from inside the unit.



Replace the bottom lid by gently pushing it down and simultaneously rotating it clockwise to secure it back into the bayonet lock.



Turn the unit back into its correct position and place on the floor (see section "Placement").



Plug and turn on the JOY S unit.



Press the touch button for a duration of 5 seconds to reset the filter replacement timer. This lets JOY S know that you have changed the filter. The indicator light flashes 3 times, and then changes from red to white.

### IMPORTANT!

Use only genuine Blueair filters to ensure proper function of your unit and to qualify for full warranty coverage.

## CARE AND MAINTENANCE

### General care

Take good care of your JOY S to ensure that it delivers optimal performance.

- During use vacuum the pre-filter occasionally to remove dust, or wash it on a gentle, low temperature cycle in the washing machine.
- Change the main filter every six months, depending on the operating conditions. Remember to unplug the unit before changing the main filter.
- Occasionally wipe the top of the unit with a dry dust cloth.



## SPECIFICATIONS

### Specifications<sup>1</sup>

Room size:	17m <sup>2</sup> (185 sq. ft.)			
Clean Air Delivery Rate (CADR)	cfm m <sup>3</sup> /h	Smoke  119 202	Dust  121 205	Pollen  131 222
Filter replacement indicator	Yes			
On/Off timer	No			
Speeds	1-2-3-off			
Dimensions	Height: 433 mm (17 in) Width: 200 mm (7.8 in) Depth: 200 mm (7.8 in) Weight: 2.4 kg (5.29 lbs)			
Air exchange <sup>2</sup>	5 per hour (17 m <sup>2</sup> or 185 sq.ft.room)			
Power usage	1.5 - 10 W			
Noise level	17 - 46 dB(A)			
Average filter service life	six months <sup>3</sup>			
Warranty	Local regulations			

<sup>1</sup>Certified ratings as stated are based on models with Particle+Carbon Filter for JOY S. Ratings may be affected by use of other Blueair filter models.

<sup>2</sup>Air changes per hour are calculated on the recommended room size, assuming 8-foot (2.4-m) ceilings. For smaller rooms, the air changes per hour will increase.

<sup>3</sup>Depending on air quality in the area of use, the recommended six-month filter lifetime may be longer.

### Blueair JOY S

Deutsche Bedienungsanleitung  
Modell: Blueair JOY S

SICHERHEIT	18
SYSTEMÜBERSICHT	20
LIEFERUMFANG	22
VERWENDUNG	23
EINRICHTUNG	24
EIN/AUS UND BETRIEBSGESCHWINDIGKEITEN	25
FILTER	26
PFLEGE UND WARTUNG	29
TECHNISCHE DATEN	30



[www.blueair.com](http://www.blueair.com)

**Blueair AB**

Karlavägen 108  
115 26 Stockholm  
Sweden  
Tel: +46 8 679 45 00  
Fax: +46 8 679 45 45  
[info@blueair.se](mailto:info@blueair.se)

**Blueair AB Middle East**

Jafza One, Office No. AB1503  
Jebel Ali free Zone  
P.O. Box No. 263947  
Dubai, United Arab Emirates  
Tel :+971 (4) 8821244  
[salesme@blueair.se](mailto:salesme@blueair.se)

**Blueair Asia Ltd.**

7fl, Grand Millenium Plaza  
181 Queen's Road Central  
Central, Hong Kong  
Tel :+852 3511 656  
[asia@blueair.se](mailto:asia@blueair.se)

**Blueair Inc.**

125 S.Clark  
Suite 2000  
Chicago, IL 60603  
USA  
Tel: +1 888 258 3247  
Fax: +1 312 727 1153  
[info@blueair.com](mailto:info@blueair.com)

**Blueair India Pvt. Ltd.**

S-237, Greater Kailash-II  
New Delhi - 110048  
India  
Tel: +91-124-4646119  
[info@blueair.in](mailto:info@blueair.in); [www.blueair.com/in](http://www.blueair.com/in)

**Blueair (Shanghai) Trading Co. Ltd.**

10th floor City Gateway  
No. 398 North Caoxi Road  
Xuhui Distr, Shanghai,  
China  
Tel: +86 21 6091 0981  
Fax: +86 21 6091 0989  
[info@blueair.cn](mailto:info@blueair.cn)