

PHILIPS

Humidifier

HU1509, HU1510



Important

Read this important information booklet carefully before you use the appliance, and save it for future reference.

To ensure the best performance, kindly suggest the firmware of your appliance is upgraded to the latest version. You can do this upgrade via the Air+ app.

Danger

- Do not spray any flammable materials such as insecticides or fragrance around the appliance.
- Do not clean the appliance with water, any other liquid, or a (flammable) detergent to avoid electric shock and/or a fire hazard.
- The water in the water tank is not suitable for drinking. Do not drink this water and do not use it to feed animals or to water plants. When you empty the water tank, pour the water down the drain.

Warning

- Be aware that high humidity levels may encourage the growth of biological organisms in the environment.
- Do not permit the area around the humidifier to become damp or wet. If dampness occurs, turn the output of the humidifier down. If the humidifier output volume cannot be turned down, use the humidifier intermittently. Do not allow absorbent materials, such as carpeting, curtains, drapes, or tablecloths, to become damp.
- Never leave water in the reservoir when the appliance is not in use.
- Empty and clean the humidifier before storage. Clean the humidifier before next use.
- Check if the voltage indicated on the appliance corresponds to the local mains voltage before you connect the appliance.
- If the supply cord is damaged, you must have it replaced by Philips, a service center authorized by Philips, or similarly qualified persons in order to avoid a hazard.
- Do not use the appliance if the plug, the power cord, or the appliance itself is damaged.
- This appliance can be used by children aged from 8 years and above and persons with reduced physical, sensory or mental capabilities or lack of experience and knowledge if they have been given supervision or instruction concerning use of the appliance in a safe way and understand the hazards involved. Children shall not play with the appliance. Cleaning and user maintenance shall not be made by children without supervision.
- Micro-organisms that may be present in the water or in the environment where the appliance is used or stored, can grow in the water reservoir and be blown in the air causing very serious health risks when the water is not renewed and the tank is not cleaned properly every 3 days.
- Standard WiFi interface based on 802.11b/g/n/ax at 2.4GHz with a maximum output power of 64mW EIRP.
- Bluetooth version 5.2 (LE) at frequency 2.4GHz with RF output less than 10mW EIRP.

Caution



- The appliance is only intended for household use under normal operating conditions.
- Always place and use the appliance on a dry, stable, flat and horizontal surface.
- Do not place anything on top of the appliance and do not sit or stand on the appliance.
- Do not use the appliance near gas appliances, heating devices or fireplaces.
- Do not place the appliance directly below an air conditioner to prevent condensation from dripping onto the appliance.
- Do not use this appliance when you have used indoor smoke-type insect repellents or in places with oily residues, burning incense, or chemical fumes.
- Do not use the appliance in wet surroundings or in surroundings with high ambient temperatures, such as the bathroom, toilet, or kitchen, or in a room with major temperature changes.
- Do not immerse the humidifier base, power cord, or plug in water.
- Empty the water tank and refill every third day. Before refilling, clean it with fresh tap water. Remove any scale, deposits, or film that has formed on the sides of the water tank or on interior surfaces and wipe all surfaces dry.
- Always unplug the appliance when you want to move, clean appliance, fill the water, or carry out maintenance.
- Do not put any substance other than water in the water tank. Do not add essential oils or chemical substances into the water.
- Use purified, distilled water or water with low mineral content to prevent the build-up of scale and the dispersal of minerals into the air. Do not use hot water.
- Do not pour water into any openings except for the water tank.
- Do not cover the nozzles while the humidifier is on. Mist should be directed away from walls, furniture, bedding, and appliances.
- Remove the water tank from the base before moving the humidifier.
- Never place the product in a washing machine or dishwasher. It would be destroyed as a result.
- During the working of the humidifier, do not remove the water tank from the base, and never touch the water conduits or any components inside the reservoir.
- The essential oils are not included with the product. Please purchase and use the essential oils if needed.
- Make sure the product is disconnected with power before dropping essential oils into the aroma box.
- Do not use substances other than essential oils to the aroma box.
- Read and follow the safety and use instruction of the essential oil carefully before using it.
- Check the ingredients information of the essential oil versus your known allergies and exclude it from use when necessary.
- Consult and follow doctor recommendation before using the essential oil for infants, pregnant women or women in the lactation period or if you have respiratory issues
- If you feel unwell, irritation or discomfort during the use of the essential oil, please stop using it.

Electromagnetic fields (EMF)

This appliance complies with the applicable standards and regulations regarding exposure to electromagnetic fields.

Recycling



This symbol means that this product shall not be disposed of with normal household waste (2012/19/EU).

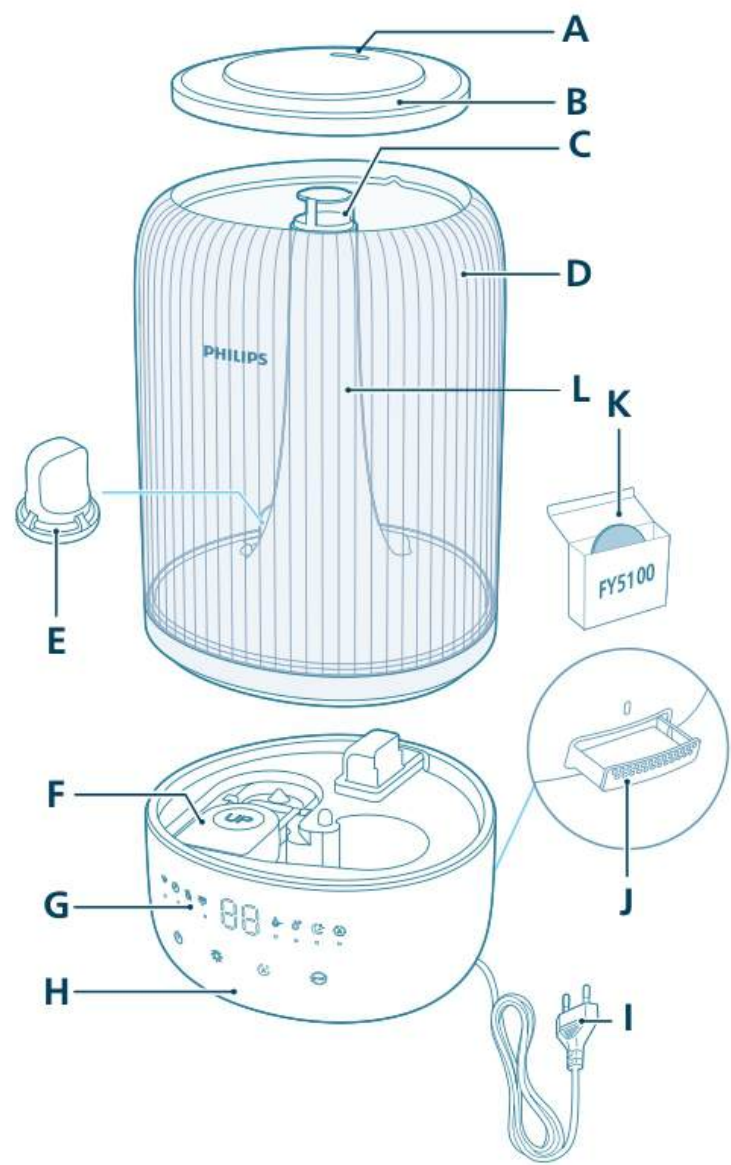
Follow your country's rules for the separate collection of electrical and electronic products. Correct disposal helps prevent negative consequences for the environment and human health.

Simplified EU declaration of conformity

Hereby, DAP B.V. declares that the radio equipment type HU1509/HU1510 is in compliance with Directive 2014/53/EU. The full text of the EU declaration of conformity is available at the following internet address: www.philips.com.

Your humidifier

Product overview



| | | | |
|---|------------------|---|---------------|
| A | Nozzle | G | Control panel |
| B | Water tank cover | H | Base |
| C | Mist outlet | I | Power plug |
| D | Water tank | J | Aroma box |

8 English

E Water filter

K Aroma pads (FY5100)

F Float

L Mist tube

Controls overview



Control buttons:

| | | | |
|--|-------------------------|--|-----------------------|
| | Power on/off button | | Light function button |
| | Humidity setting button | | Mode switch |

Long press the button(s) for 3 seconds:

| | | | |
|--|----------------|--|-------------|
| | Cleaning reset | | Wi-Fi reset |
|--|----------------|--|-------------|

Display panel:

| | | | |
|--|------------------------|--|--|
| | Auto mode | | Sleep mode |
| | WiFi indicator | | Medium mode |
| | High mode | | Humidifier cleaning alert |
| | Water refill indicator | | Timer indicator (available in the app) |

Getting started

First time use

Note:

Remove all packing materials before first time use.

Take the water tank off of the base and remove all tapes.

Rinse all parts before first use.

Select a firm, flat, water-resistant surface for the humidifier, ensuring it is positioned at least 30cm away from walls.

Ensure that the mist is directed away from walls, furniture, and other appliance.

- 1 Make sure that the float is well in place.



- 2 Remove the top cover from the water tank.



- 3 Make sure the water filter is attached properly.



- 4 Fill the water tank with water. Do not fill with hot water.

Note:

Use purified, distilled water or water with low mineral content to prevent the build-up of scale and the dispersal of minerals into the air.



- Do not exceed the water level indication when filling water.

10 English



- Do not pour water through the ultrasonic mist outlet.



- Do not pour water directly into the base.



- 5 Reattach the top cover to the water tank.

Using the aroma function

Notes:

The essential oils are not included with the product. Please purchase and use the prescribed essential oils if needed.

Read the user manual of essential oils carefully before using the aroma function.

Make sure the product is disconnected with power before dropping essential oils into the aroma box.

Do not use substances other than essential oils.

Read and follow the safety and use instruction of the essential oil carefully before using it.

Check the ingredient information of the essential oil against your known allergies and exclude it from use when necessary.

Consult and follow your doctor's recommendation before using essential oils for infants, pregnant women, women in the lactation period, or if you have respiratory issues.

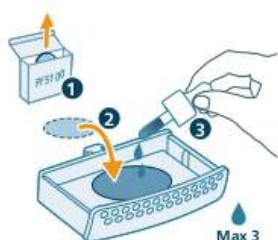
If you feel unwell, experience irritation or discomfort during the use of essential oils, please discontinue use.

Do not use the aroma function of essential oils for infants, pregnant women, or women in the lactation period.

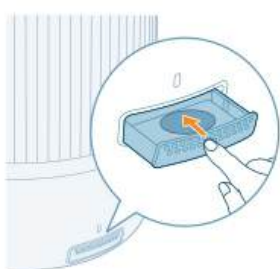
Only add essential oils directly to the aroma pad. Don't add essential oils to other parts, otherwise the parts will be damaged by the oil.



1 Push the aroma box to automatically eject it.



2 Drop in 2-3 drops of essential oils to the supplied aroma pad.



3 Push the aroma box to back into the appliance.

Understanding Wi-Fi indicator

| Wi-Fi icon status | Wi-Fi connection status |
|-------------------|-------------------------------|
| Blink in orange | Connecting to the smart phone |
| Stable in orange | Connected to the smart phone |
| Blink in white | Connecting to the server |

Stable in white

Connected to the server

Off

Wi-Fi function disabled or device lights are off


Wi-Fi connection

Setting up the Wi-Fi connection for the first time



- 1 Download and install the Philips "Air+" app from the App Store or Google Play.



- 2 Put the plug of the humidifier in the power socket and press the power button to turn on the humidifier.
 - The Wi-Fi indicator  blinks orange for the first time.



- 3 Make sure that your smart phone or tablet is successfully connected to your Wi-Fi network.

Note:

Enable Bluetooth feature on your smart phone to ensure the smooth pairing.

Please ensure your smartphone is connected to a 2.4GHz (home) Wi-Fi network instead of a 5GHz Wi-Fi network or public Wi-Fi. For a successful pairing, we suggest turning off your mobile data before initiating the pairing process.



- 4 Launch the Philips "Air+" app and click on **"Add a device"** or press the "+" button on the screen. Follow the on-screen instructions to connect the air purifier to your network.
 - After a successful connection, the Wi-Fi indicator remains steady in white.

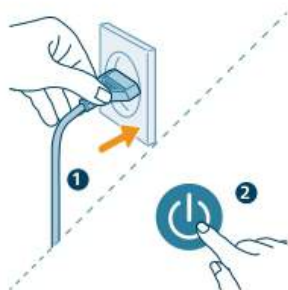
Note:


This instruction is only valid when the humidifier is being set up for the first time. If the network has changed or the setup needs to be performed again.

If you want to connect more than one humidifier to your smart phone or tablet, you can add the humidifier in the app on additional smart phones without doing the Wi-Fi connection reset on the device.



Make sure that the distance between your smart phone or tablet and the humidifier is less than 10 m without any obstructions.

Reset the Wi-Fi connection



- 1 Put the plug of the humidifier in the power socket and press  to turn on the air humidifier.



- 2 Long press  button at the same time for 3 seconds until you hear a beep.
 - The humidifier goes to pairing mode.
 - The Wi-Fi indicator  blinks orange.
- 3 Follow the steps 3-4 in "Setting up the Wi-Fi connection for the first time" section.

Using the humidifier

Understanding the humidity light

Relative humidity represents the amount of water vapor in the atmosphere. The humidification indicator has four status levels:

The humidification light has three colors:



| Humidification light color | Current humidity | What does it mean? |
|----------------------------|------------------|----------------------|
| Purple | <40% | Dry |
| Blue | 40-60% | Comfortable humidity |
| Green | >60% | Too humidity |

Note: The default target humidity is 50%RH, you can set the desired target humidity by pressing the humidity setting button.

Water level

When there is not enough water in the water tank, the water refill indicator is on, the humidifier stops working, The humidifier will resume work when you refill water into the water tank.

Refilling water

Note:

Empty the water tank and refill every third day.

When filling water, do not exceed the maximum water level.

Do not shake the water tank when moving it, or water might leak.

Follow the steps in "First time use" for refilling water.

Turning on and off

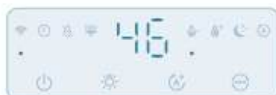
Note:

For optimum humidification performance, close doors and windows.

Keep curtains away from the air inlet or air outlet.

The humidifier is applicable for ambient temperature range : 5-40 °C.

1 Put the plug of the humidifier into the power socket.



2 Press the power button to switch on the humidifier.

- The humidifier beeps.
- The humidity light chooses the appropriate color to match the surrounding humidity level.
- The humidifier operates in the Medium mode with current humidity level displayed on the screen.

- 3 Press the power button again to switch off the humidifier.

Note: If the humidifier stays connected to the electrical outlet after turning OFF, it will operate under the previous settings when turned ON again.



Adjusting mist direction

Rotate the nozzle to preferred mist direction.



Changing the mode setting

You can choose the **Auto mode**, the **Sleep mode**, the **Medium mode**, or the **High mode** by pressing the mode switch button.

Auto mode (☼): The humidifier automatically adjusts the mist level in accordance with the ambient air humidity.



Sleep mode (☾): The humidifier operates quietly at a low mist level. After 3 seconds, the screen lights turn off.



Medium mode (💧-): The humidifier operates on the medium mist level.



High mode (💧+): The humidifier operates on the highest mist level.



Setting humidity level

Note:

The default humidity level is 50%RH.

The humidity level can only be adjusted in the Auto mode.

The humidifier will change to Auto mode automatically when you set target humidity level in other modes.

You can adjust the humidity level by pressing the humidity setting button to choose from 40%, 50%, 60%, or 70%.



Using the light function



You can press the button to turn on humidity light , ambient light or turn off all lights and the control panel.

- The humidifier will turn on the humidity light by default.



- You can press the light function button to switch to ambient light mode. Tailor the brightness and the color in the Air+ app.



You can press the light function button to turn off all lights and the control panel. Press any button to wake up the panel first, and press the light button again to set the light mode you want in 3 seconds.

Cleaning and maintenance

Note:

Always unplug the appliance before you clean it.

Never immerse the appliance in water or any other liquid.

Avoid pouring water through the air inlets and outlets.

Never use abrasive, aggressive, or flammable cleaning agents such as bleach or alcohol to clean any part of the appliance.

Cleaning the humidifier

Clean the humidifier when the cleaning alert is on or every three days.

Regularly clean the inside and outside of the humidifier to prevent dust from collecting.

18 English



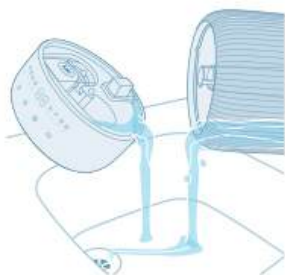
- 1 Wipe away dust with a soft dry cloth from the body of the humidifier.
- 2 Switch off the appliance and unplug from the power socket.



- 3 Remove the top cover from the water tank.



- 4 Remove the water tank from the base.



- 5 Pour water out from the tank and the base.



- 6 Remove the water filter from the water tank.

- 7** Turn the water tank upside down.



- 8** Remove the deafener from the bottom of the water tank.



- 9** Remove the float from the base chamber.



- 10** Rinse the water tank, top cover, float, deafener and water filter with water.



- 11** Wipe the base clean and dry.



12 Put the float back to the base chamber.



13 Put the water filter back to the water tank.



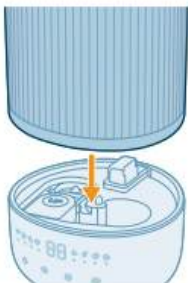
14 Put the deafener back to the bottom of the base.



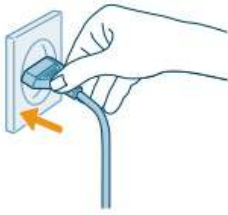
15 Reattach the top cover.



16 Re-install the water tank onto the base.



17 Put the power plug into the power socket.



18 Press and hold light button for 3 seconds to reset the cleaning time.



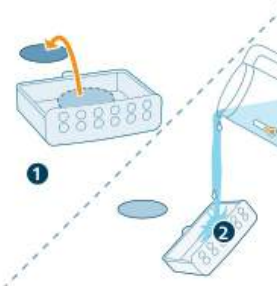
Cleaning the aroma pad and box

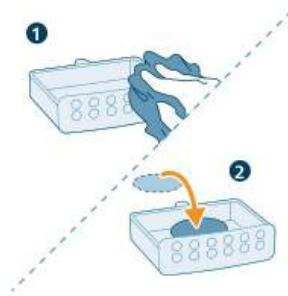
For effective aromatherapy, the aroma pad should always be cleaned before using a new essential oil blend. Do not mix essential oil blends.

1 Remove the aroma box by pressing it in, then pulling it out.

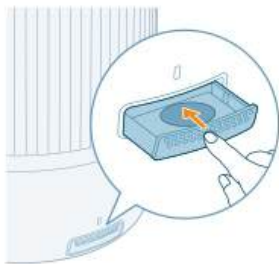


2 Remove the aroma pad and rinse the pad and the box under warm, running water.





3 Dry with a clean cloth and place the pad back into the aroma box.



4 Place the aroma box back inside the air humidifier

Note: Do not pour liquid cleaners or detergents into the aroma pad or box.

Replacing the Aroma Pad

If the aroma pad becomes deformed or damaged after repeated washing, it may need to be replaced. To maintain the performance of your air humidifier, only use official Philips aroma pads.

Storage

- 1 Turn off the humidifier and unplug from the power socket.
- 2 Clean the humidifier (see Chapter "**Cleaning and Maintenance**").
- 3 Let all parts air dry thoroughly before storing.
- 4 Store the humidifier in a cool, dry location.

Troubleshooting

This chapter summarizes the most common problems you could encounter with the appliance. If you are unable to solve the problem with the information below, contact the Consumer Care Center in your country.

| Problem | Possible solution |
|---|---|
| The humidifier does not work. | Make sure that there is power supply to the humidifier. |
| | Make sure that the water tank is filled with water and the water tank is placed properly on the base. |
| Little or no mist comes out of the mist outlet. | Put the plug of the humidifier into the power socket and switch on the humidifier. |
| | It may have achieved your target humidity rate. |

| | |
|--|---|
| | Make sure that the water tank is filled with water and placed properly. |
| | There may be too much water in the base (above the MAX reminder on the base). Empty the base chamber. Refill the water tank (not the base chamber) and place the water tank properly onto the base. |
| | Make sure the bottom of the base is not blocked. The humidifier should not be set on carpet or other surfaces that may block the base. |
| | Make sure the nozzle is not blocked. |
| | Make sure the mist tube is not blocked or clogged. |
| | Make sure the humidifier is on a level surface. |
| | The water temperature may be too low. Turn the mist level to the highest setting and let the humidifier run for a while, then adjust to the desired setting. |
| I do not see the humidity level change. | Your room might have too much ventilation. Please close doors and windows. |
| | Your room size is too big. This humidifier is suitable for room size $\leq 34\text{m}^2$. |
| | Turn the mist level to a higher setting. |
| | When used in a dry environment, the moisture will be absorbed surrounding objects such as walls and furniture, which can prolong the humidification time. |
| | Cleaning the humidifier (see the chapter 'Cleaning and maintenance'). |
| The humidifier stops even when i feel quite dry. | The water tank is empty, please refill with water. |
| | The humidity level around product has been achieved to target setting in auto mode, it will restart automatically once the humidity level lower than target setting. |
| | Our device will stop working when the humidity level around product is higher than 70% because it may lead to diversity fungi mold growth. |
| There are some white dust around humidifier. | The white deposits are called scale and they consist of minerals from the water. |
| | Use purified, distilled water or water with low mineral content to prevent the build-up of scale and the dispersal of minerals into the air. |
| | We recommend using the Anti-calc cartridge to protect your humidifier from calc and prevent white residue on nearby surfaces. You need to replace it when necessary. |

24 English

| | |
|---|--|
| It is too wet around humidifier. | Humidity may be too high. Turn the mist level to a lower setting. |
| There is unpleasant smell coming out from the humidifier. | <p>The first few times you use your air humidifier, it may produce a plastic smell.</p> <p>This is normal and will fully disappear within a few days.</p> |
| | Clean the humidifier (see the chapter 'Cleaning and maintenance'). |
| My aroma function doesn't work well(too weak or strong). | Use proper 2-3 drops essential oil. |
| | Different essential oil may has different perceived intensity. |
| | It need take sometime to evaporate the smell to whole room. |
| The water tank leaks. | Make sure that the humidifier is not overfilled with water. |
| | Make sure that the humidifier is well assembled/connected every time after you clean it or after you remove the water tank for refilling. |
| | Make sure that the water tank is properly placed. If the problem persists, contact the Consumer Care Center in your country. |
| If the humidifier is not used for a long time, How to store and reuse it? | When the humidifier is not used for a long time, bacteria and mold may grow. Please follow below steps for storage and reuse. |
| | Clean the water tank and base thoroughly before storage. |
| Mould grows inside the humidifier. | Clean the water tank and base regularly. |
| The Wi-Fi setup is not successful. | Please ensure your smart phone is connected to a 2.4GHz (home) Wi-Fi network instead of a 5GHz Wi-Fi network or public Wi-Fi. For a successful pairing, we suggest turning off your mobile data before initiating the pairing process. |
| | Ensure to enable the following permissions: "Location", "Storage", "Bluetooth", and "Local Network" on your smart phone. After a successful Wi-Fi setup, you can change permission settings as desired. |
| | Please verify that you have entered the correct Wi-Fi password. The password is case-sensitive, has a limit of 63 characters. Special symbols are not accepted. |
| | Ensure the network name of your home Wi-Fi is correct. The network name is case-sensitive. |
| | If you are using a VPN on your smart phone, please turn it off before starting the pairing process. |
| | If your router has a whitelist set up to block pairing, please disable the whitelist to ensure successful connection. |

Please ensure that both your device and smart phone are within 10 meters of the router.

Ensure the app has been updated to the latest version.

To ensure a strong Wi-Fi connection, avoid placing your device near other electronic devices, bright light sources, or signal stations that may cause interference. If you experience connectivity issues, move the device away from these sources and attempt to reconnect it to the Wi-Fi network.

Consult the help section in the app for extensive and up-to-date troubleshooting tips.

Warranty and support

Versuni offers a two-year warranty after purchase on this product. This warranty is not valid if a defect is due to incorrect use or poor maintenance. Our warranty does not affect your rights under law as a consumer. For more information or for invoking the warranty, please visit our website **www.philips.com/support**.

Order parts or accessories

If you have to replace a part or want to purchase an additional part, go to your Philips dealer or visit **www.philips.com/support**.

If you have problems obtaining the parts, please contact the Philips Consumer Care Center in your country.