

WELCARE

STAY-DRY **BEDWETTING** ALARM

Children's **Upper Arm** Bedwetting Alarm for Ages 5+

Model: WBA100



Instruction Manual & Warranty Information

WELCARE

STAY-DRY BEDWETTING ALARM

**Thank you for purchasing this
Welcare Stay-Dry Bedwetting Alarm.**

Bedwetting Alarm
Model: WBA100



Please keep this instruction manual in a safe place where it is readily available.
The illustrations in this manual may differ slightly from the product itself.

Contents

Important Safety Information	4
Bedwetting Information	5
Features	6
Product Contents	6
Bedwetting Alarm Components	7
Before Using the Bedwetting Alarm	8
Using the Bedwetting Alarm	8
Charging the Bedwetting Alarm	11
Maintenance	12
Troubleshooting	13
Warranty	15
Warranty Form	17
Technical Data	19
Disposal	20

Important Safety Information



Read this section thoroughly before using the product. Please ensure you observe the safety instructions to avoid strangulation risk, accidents, injury and damage.

Intended purpose

- The Welcare Stay-Dry Bedwetting Alarm is for training a child out of bedwetting. **DO NOT** use for purposes other than bedwetting. It is **not** a therapeutic device.
- It is **not** recommended for children under 5 years of age.
- This product is not intended for use by persons (including children) with reduced physical, sensory or mental capabilities, or lack of experience and knowledge, unless they have been given supervision or instruction concerning use of the appliance by a person responsible for their safety.

Safety Warnings

- Keep the product and its components out of reach of children when not in use.
- Keep children away from the packaging material.
- **DO NOT** let children play with the product.
- **DO NOT** use the product on a child without a night shirt or pyjama top. This is important to avoid strangulation risk.
- **DO NOT** allow the product to be submerged into water as this will damage the internal components.
- **DO NOT** drop or put heavy objects on the product.
- **DO NOT** attempt to open or disassemble the product.
- This product is equipped with a Lithium-ion battery. Failure to follow these instructions could cause the Lithium-ion battery to leak acid, become hot, explode or ignite and cause injury and/or damage:

- **DO NOT** expose to temperatures over 60 °C.
- **DO NOT** store or leave the product near sources of heat, in direct strong sunlight, in a high temperature location, in a pressurized container or in a microwave oven.
- If battery leakage occurs and comes into contact with the skin or eyes, immediately rinse with plenty of water and seek medical advice.
- The product must only be supplied at safety extra low voltage corresponding to the marking on the product.

Bedwetting Information ¹

Bedwetting (nocturnal enuresis) is a common condition among young children and learning how to become dry at night is not an easy process.

Bedwetting can often have emotional and social effects on a child, due to feelings of embarrassment.

Bedwetting alarms have been found to be one of the most effective methods of training a child out of bedwetting. When the child wets the bed, a moisture-sensitive alarm will sound and/or vibrate helping the child to recognise and respond to the sensation of a full bladder while asleep.

The child's participation in the process and adult involvement/ support is integral to its success. The alarm uses behavioural/conditioning techniques to train a child out of bedwetting.

It can take up to 12 weeks for a child to be fully dry at night without needing the bedwetting alarm. Gradually over time the child learns to 'hold on' throughout the night without waking, or will wake up and go to the toilet when their bladder is full. If bedwetting persists after 3 to 6 months of alarm training, alternative treatment options should be considered.

1. *The Children's Hospital at Westmead and John Hunter Children's Hospital. 2018 Nocturnal Enuresis Resource Kit. 2nd Edition - A tool for healthcare professionals.*

If you would like further information about bedwetting, please contact your healthcare professional or either of the below national foundations for free, confidential advice:

Continence Foundation of Australia

Free Helpline: 1800 33 00 66

www.continence.org.au

Continence New Zealand

Free Helpline: 0800 650 659

www.continence.org.nz

Features

- USB Rechargeable Battery
- LED Light Indicator
- Sound & Vibration Mode
- Vibration Only Mode

Product Contents

- Bedwetting Alarm
- Adjustable Arm Band
- USB Charging Cable
- Progress Chart & Stickers
- Instruction Manual & Warranty Information

Bedwetting Alarm Components

Front view:

- A. Alarm Body
- B. Adjustable Arm Band
- C. Alarm Speaker
- D. LED Light Indicator

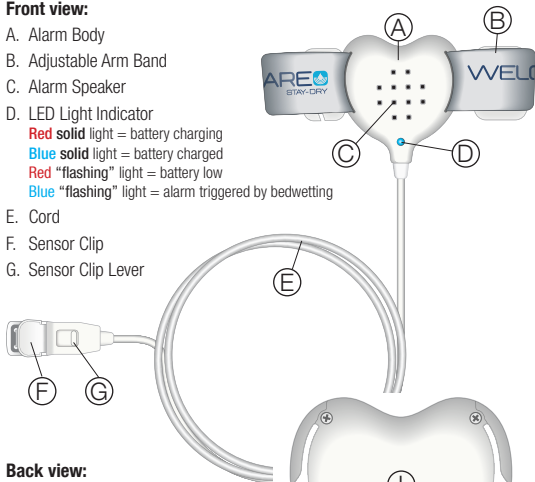
Red solid light = battery charging

Blue solid light = battery charged

Red "flashing" light = battery low

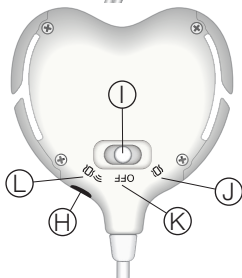
Blue "flashing" light = alarm triggered by bedwetting

- E. Cord
- F. Sensor Clip
- G. Sensor Clip Lever



Back view:

- H. Micro USB Port
- I. Mode Switch
- J. Vibration Only Mode (🔊)
- K. OFF
- L. Sound & Vibration Mode (🔊🔊)



Before Using the Bedwetting Alarm

- Check the product is intact. **DO NOT** use if broken.
- Ensure the product is fully charged. Refer to *Charging the Bedwetting Alarm* instructions on page 11.
- Test the product first on a damp cloth. Turn the product onto the Vibration Only or Sound & Vibration Mode via the mode switch. Clamp the sensor clip onto the damp cloth. If the product is sounding and/or vibrating then the product is working.
- Let the child experiment with the product before using at night time, so they are not frightened by the noise.

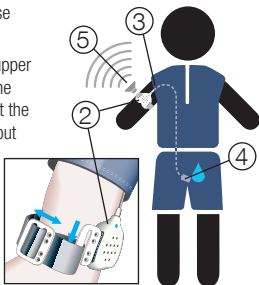
If any abnormalities are detected, please contact our service centre:

In Australia - 1800 807 464

In New Zealand - 0800 523 583

Using the Bedwetting Alarm

1. Select which Mode you wish to use via the mode switch.
2. Attach the product to the child's upper arm. Insert the plastic hook into the small loop of the arm band. Adjust the tightness to ensure it fits snugly, but comfortably (not too tight).
3. Pass the cord under the child's pyjama top to avoid strangulation risk.



4. Open the sensor clip via the lever and attach it to the child's underwear/ pyjama pants (where urine is most likely). Ensure the sensor clip is closed firmly on the fabric and that the cord does not hinder the child's movement.
5. At the first sign of moisture, the alarm will sound and/or vibrate to wake the child. The LED indicator will flash blue.
6. As soon as the child wakes up (they may need assistance from you), they should go to the toilet and finish emptying their bladder. It is important the child learns to go directly to the toilet before doing anything else. Turn off the alarm and unclip it from the child's underwear (you can teach the child to do this themselves).
7. Clean and dry the product as per *Cleaning* instructions on page 12 and re-attach it to a clean dry pair of underwear or pyjama pants.

Helpful Hints

- Remind the child each night that when the alarm triggers and their underwear is wet they need to stop 'weeing' and go to the toilet.
- Leave a night light on in case the child is frightened when the alarm goes off. This will also help them navigate safely to the toilet in the dark.
- Make sure you are close enough to the child's room to be able to hear the alarm and help them as needed.
- Keep a spare set of sheets, underwear and pyjamas close by.
- The program may be slow and frustrating, but always remember to offer encouragement and give praise when the child has a dry night. Do not scold the child if they wet the bed.
- Restricting intake of liquids before bedtime does not help treat bedwetting. It is important the child has enough to drink during the day.
- Drinks containing caffeine should be avoided.

Progress Chart

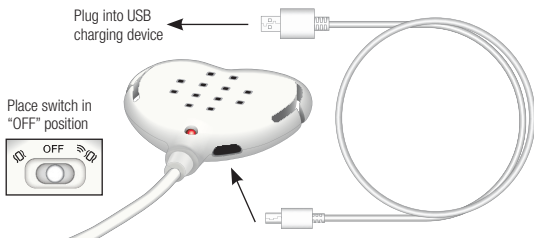
- We have included a progress chart and stickers to help track of the child's progress. Ask the child if they remember the alarm going off and what they did.
- You can also introduce a reward scheme for positive behaviour to encourage the child to want to succeed.

Completion of Training

- The child should continue to use the alarm until they have had 14 consecutive dry nights.
- It can take up to 12 weeks for a child to be fully dry at night without needing the bedwetting alarm.
- To reduce the chance of relapse, the process of “overlearning” can be implemented. *Ask your healthcare professional if the child should trial this process before discontinuing the alarm. This process should **not** be used if the child is on Desmopressin medication.*
- The child should have a large drink each night in the hour before bed and continue with alarm training, until a further 14 consecutive dry nights have been achieved.
- When the child has reached 14 dry nights in a row using the over-learning method, the alarm can be removed and the pre-bedtime drink stopped.
- A relapse is considered to be when the child wets the bed two or more nights consecutively. If relapse occurs, repeating alarm training will often produce a good response.
- If bedwetting persists after 3 to 6 months of alarm training, alternative treatment options should be considered.

Charging the Bedwetting Alarm

- The product has an in-built rechargeable Lithium-ion battery.
- When the battery power is low, the LED indicator will flash red.
- When the battery power has run out completely the LED indicator will not light up and the alarm will not sound or vibrate.
- To charge the battery, turn the product to the OFF Mode and plug the USB charging cable into the micro USB port on the product and then into a USB charging device.
- The battery will take approximately 2-3 hours to charge.
- The battery can last for up to 7-8 hours of continuous alarming on Vibration Only Mode & up to 4.5 hours of continuous alarming on Sound & Vibration Mode.
- The LED indicator will shine **red** whilst charging.
When the product is fully charged the LED indicator will turn solid **blue**.
- **DO NOT** use the product while it is charging.



Maintenance

Cleaning

- Remember to clean the product after each bedwetting episode.
- Rinse the sensor clip under running water and thoroughly wipe with a dry cloth.
- The arm band can be hand washed in cold or warm water with a mild detergent. Please remove the arm band from the product before washing.
- The product can be disinfected with alcohol (70-80% strength) using a soft dry cloth.
- Clean the body of the product with a damp wet cloth only.
- **DO NOT** allow the product to be submerged into water or use harsh chemicals as this will damage the internal components.

Storage

- Clean the product as per above Cleaning instructions.
- Turn the product to the OFF Mode and leave the sensor clip in the open position when not in use.
- Keep the product and its components out of reach of children when not in use.
- Store in a safe cool dry place.
- **DO NOT** store or leave the product near sources of heat, in direct strong sunlight, in a high temperature location, in a pressurized container or in a microwave oven.
- **DO NOT** put heavy objects on the product.

Troubleshooting

Problem	Possible Cause	Solution
Does not turn on.	Battery has run out.	Charge the battery with the USB charging cable.
Alarm not sounding.	Battery has run out.	Charge the battery with the USB charging cable.
	Product is in OFF Mode.	Turn the Mode switch to either the Sound & Vibration Mode or the Vibration only Mode.
Alarm is sounding.	The child has wet the bed.	Attend to the child and turn the product to the OFF Mode.
Alarm is too loud.	This is normal.	The alarm is designed to be loud to wake the child and an adult. You can use the Vibration only Mode if desired.
Red light is flashing.	Product is low on battery.	Charge the battery with the USB charging cable.
Red solid light is on.	Product is charging.	The red light will turn to blue once the product is fully charged.
Blue solid light is on.	Product is fully charged.	Unplug the product from the USB charging cable.

Problem	Possible Cause	Solution
Blue light is flashing.	Alarm has been triggered.	Attend to the child and turn the product to the OFF Mode.
Not charging.	Charging cable connection is loose.	Ensure a firm connection of the micro USB port and USB charging device.

If the problem is not solved by the troubleshooting guide or you have any queries, please contact our service centre:

In Australia - 1800 807 464

In New Zealand - 0800 523 583

DO NOT attempt to open or repair the product yourself.

PRODUCT WARRANTY

Please register your warranty information at:

AUS – www.jadavey.com.au

NZ – www.jadavey.co.nz

This Welcare Stay-Dry device is warranted to be free of manufacturing defects for 1 year from the date of purchase*. This warranty is void if the product is modified or altered is subject to misuse or abuse, damaged in transit or lack of responsible care, is dropped, if damage occurs by reason of failure to follow the written instruction booklet enclosed, or if product repairs are carried out without authority from J.A.Davey Pty Ltd.

We will repair, or at our option replace free of charge, any parts necessary to correct material or workmanship, or replace the entire unit and return to you during the period of the warranty. Otherwise, we will quote for any repair which will be carried out on acceptance of our quotation. The benefits conferred by this warranty are in addition to all other rights and remedies in respect of the product, which the consumer has under the trade practices act and other state or territory laws in Australia and New Zealand.

Our goods come with guarantees that cannot be excluded under Australian and New Zealand Consumer Law. You are entitled to a replacement or refund for a major failure and for compensation for any other reasonably foreseeable loss or damage. You are also entitled to have the goods repaired or replaced if the goods fail to be of acceptable quality and the failure does not amount to a major failure.

BEFORE YOU SEND IN YOUR UNIT FOR SERVICE

Before sending in your unit for service, please take a few minutes to do the following:

- In your instruction manual, read the troubleshooting section and the section describing common errors, their cause and remedies. Product instruction manuals can be downloaded online.
- Contact Welcare Stay-Dry customer service. Our staff are trained to assist you with most issues you may have experienced, without the need to send your product in for service.

PLEASE CALL OUR TOLL FREE NUMBER:

IN AUSTRALIA:

Free call: 1800 807 464

IN NEW ZEALAND:

Free call: 0800 523 583

SENDING IN YOUR UNIT FOR SERVICE

1. Should repair be needed within the warranty period, enclose the tear off section of this warranty card and your proof of purchase receipt. Please ensure all relevant details are completed and before sending your unit in for service. Please ensure your contact details are still current and include a brief description of the problem you are experiencing together with your purchase receipt.
2. Include the unit with all product components in your package. This is extremely important, so our repair technicians can make the correct diagnosis with any problems.
3. Please return the unit, warranty card or repair form at your cost to:

IN AUSTRALIA

J.A.Davey Pty Ltd
Welcare Stay-Dry Repairs
PO Box 84
Port Melbourne
Victoria, Australia 3207

IN NEW ZEALAND

BV Medical
Welcare Stay-Dry Repairs
Unit 7, 110 Mays Road
Onehunga
Auckland, New Zealand 1061

Warranty Form

**PLEASE RETAIN THIS WARRANTY CARD.
RETURN THIS PORTION ONLY WHEN YOU RETURN YOUR PRODUCT
FOR REPAIR UNDER WARRANTY.**

NAME:

ADDRESS:

POSTCODE:

DAYTIME PHONE:

EMAIL:

MODEL:

DATE OF PURCHASE:

/

/

PLEASE ATTACH PROOF OF PURCHASE

RETAILER'S NAME:

RETAILER'S ADDRESS:

POSTCODE:

BRIEF DESCRIPTION OF PROBLEM YOU ARE EXPERIENCING:

WARRANTY IS VOID UNLESS THE ABOVE INFORMATION IS COMPLETED AND CORRECT.



Technical Data

Product Name	Welcare Stay-Dry Bedwetting Alarm
Model Number	WBA100
Power	In-built Lithium-ion Rechargeable Battery (via USB) 5.0V DC 0.15A
Operating Conditions	Temperature: 0°C to 40°C Humidity: 45% to 80% RH (non-condensing)
Storage/ Transport Conditions	Temperature: -20 °C to 60°C Humidity: 45% to 85% RH (non-condensing)
Dimensions	Approx. 60 x 50 x 10mm (alarm body)
Weight	Approx. 50g (out of packaging)
Materials	ABS Plastic, Nylon Elastic Armband
Contents	Bedwetting Alarm, Adjustable Arm Band, USB Charging Cable, Progress Chart & Stickers and Instruction Manual



WELCARE



STAY-DRY BEDWETTING ALARM

IN AUSTRALIA:

J.A.DAVEY PTY LTD

Telephone: 1800 807 464

Website: www.jadavey.com.au

IN NEW ZEALAND:

J.A.DAVEY LTD

C/- Healthcare Logistics

Telephone: 0800 523 583

Website: www.jadavey.co.nz

**Should you require any further information
please do not hesitate to contact us.**

Disposal

At the end of its life, please treat this product as electronic waste and dispose of responsibly according to current local regulations.

